

A Tech

Automotive Technology



Certification Programs for



ATech Training, Inc.
12290 Chandler Drive
Walton, KY 41094

Phone: (859) 485-7229 Fax: (859) 485-7299
www.atechtraining.com

Four Area Certification Plan- Year 1

ATech's recommended certification program includes not only what is necessary to meet certification requirements but also modules which enhance student performance and maintain interest. The A6-Electrical/Electronics area is recommended as the starting section utilizing ATech's computer based GM S.E.T. "Virtual" Board Stages 1,2 and 3 or the AT1800CBI. Computer based "virtual" training is the educational environment that today's students find most comfortable. Traditional book-based programs are also available.

Phase 1-Electrical/Electronics

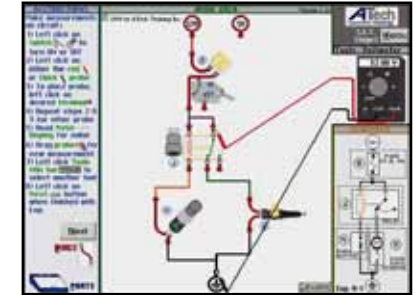


Traditional GM S.E.T.

or



1800 Series with CBI



"Virtual" GM S.E.T.

While students are involved with the basic electrical/electronics program, have them also work with the **Shop Orientation and Safety Modules**. This maintains student interest throughout the "drier" materials.

Phase 2- Advanced Electrical/Electronics System

10 Modules (Actual Car Parts)



Power Seat System
Model 860FJ



Lighting System
Model 821FJ



Starting System
Model 811FJ

OTHER MODULES INCLUDE:

- Charging System- Model 812FJ
- Wiper/Washer System- Model 830FJ
- Power Door Locks System- Model 850FJ
- J1850 Network System- Model 3801
- Instrument Panel System- Model 822FJ
- Power Windows System- Model 840FJ
- Evaporative System- Model 640

Any of the 10 Advanced Electrical/Electronics System Modules can be studied in any order.

A6 Certification Area NATEF Task Coverage:

100% of P1, 100% of P2, 57% of P3

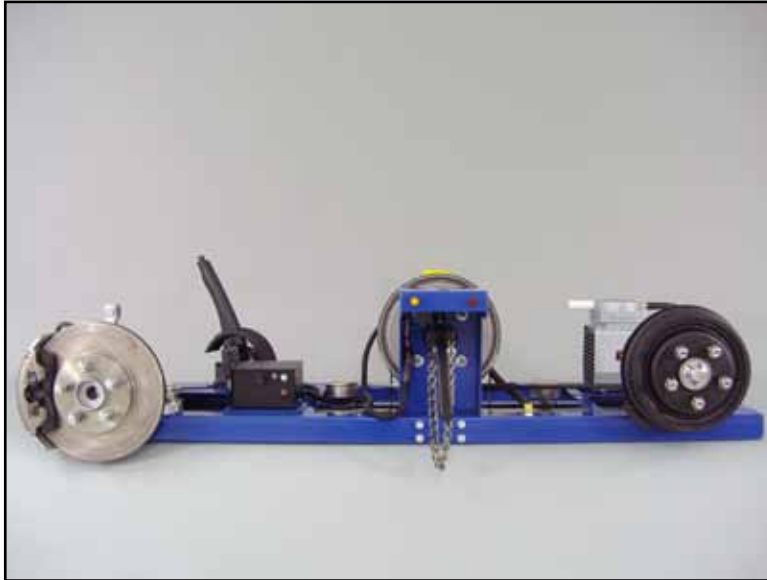
230 Hours

ATech Training, Inc.

Page 2

Four Area Certification Plan- Year 1

Basic Brakes



Two Wheel Brake Trainer Model 400-2W

And/Or



Four Wheel Brake Trainer Model 400-4W

**A5 Certification Area NATEF Task Coverage:
100% of P1, 83% of P2, 60% of P3
100 Hours**

ATech Training, Inc.

Page 3

Four Area Certification Plan- Year 1

Basic Engine Performance

Basic Fuel Injection



Injector/Fuel Pump System
Model 670

Basic Injection Systems



GM Direct Ignition System
Model 1711F



Distributor Ignition System
Model 700F

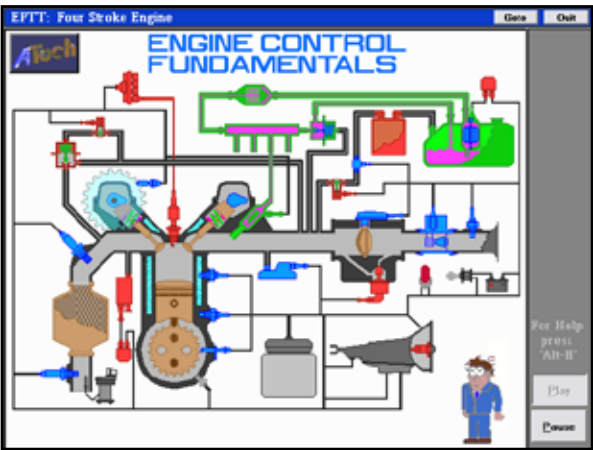
Four Area Certification Plan- Year 1

Basic Engine Performance



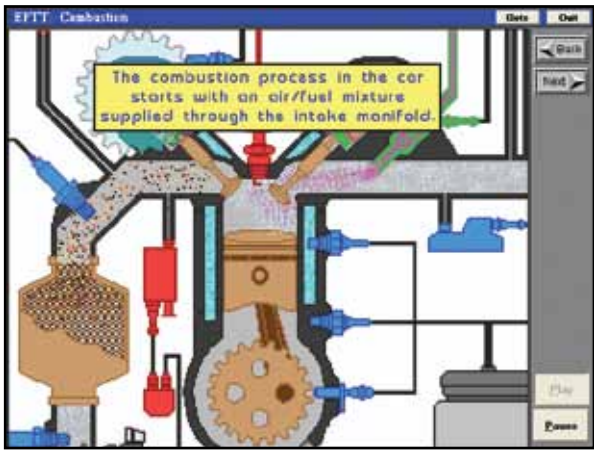
Engine Performance Troubleshooting Trainer
Model 3601

Interactive Software Programs for the 3601



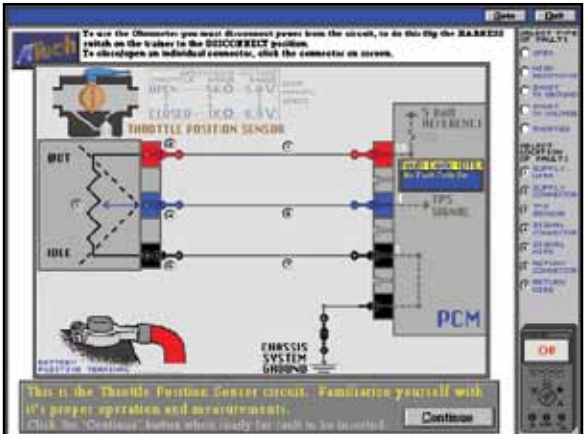
3610

Engine Control Fundamentals



3620

Engine Control Systems Operation



3630

Engine Control Diagnostic Fundamentals

Four Area Certification Plan- Year 1

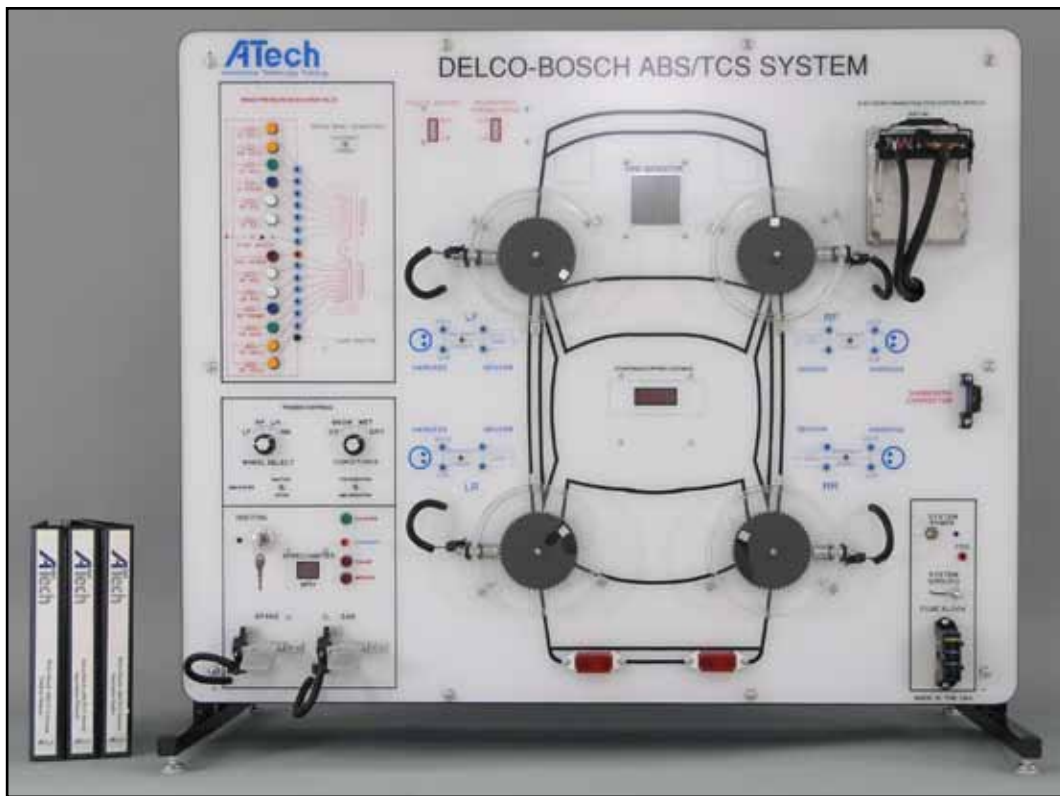
Basic Suspension and Steering



Suspension and Steering System
Model 500

Four Area Certification Plan- Year 2

Advanced Brakes



DELCO-BOSCH ABS/TCS Trainer
Model 1431/40

Four Area Certification Plan- Year 2

Advanced Engine Performance

Advanced Powertrain Controls



GM J1850 OBD II System
Model 2652

Advanced Automotive Emissions



Automotive Technology Trainer
Model 600

Four Area Certification Plan- Year 2

Advanced Engine Performance

Advanced Ignition Systems



GM C³I Ignition System
Model 1771F



Ford EDIS-V Ignition System
Model 1791F

A8 Certification Area NATEF Task Coverage:
100% of P1, 95% of P2, 60% of P3
250 Hours

Atech Training, Inc.

Page 9

Four Area Certification Plan- Year 2

Advanced Suspension and Steering



GM SIR Dual Air Bag System
Model 1551

A3 Certification Area NATEF Task Coverage:
100% of P1, 97% of P2, 86% of P3
100 Hours

680 Total Program Hours