

# COMPUTER BASED TROUBLESHOOTING SKILL DEVELOPMENT MODEL 3631

ATech Training Inc. introduces the new ATech 3631 software. Aftermarket Shop Owners, Public School Instructors, and Aftermarket Training Instructors can now give their students the opportunity to practice troubleshooting in a comprehensive and systematic manner.

This is the first training system of its kind. You can learn how to do "Sensor End Diagnostics" and practice those hard to find engine control system problems. The ATech 3631 Engine Control System Troubleshooting program will allow you to insert electrical faults of all types in either a random mode or in a controlled mode. The ATech 3631 trainer has a built in Digital Multimeter (DMM). There are 5 circuits to troubleshoot: the Fuel Pump Relay, Fuel Injector, Inlet Air Temperature Sensor, Coolant Temperature Sensor, and the Throttle Position Sensor. The ATech 3631 can insert more than 60 different faults across the 5 circuits. The faults cover the entire range of open circuits, shorts to power, shorts to ground, shorted components, and high resistance. There is almost no way to "bug" components, or vehicles to achieve this level of troubleshooting practice. But with the ATech 3631 you can put in all the "bugs" with just a click of the mouse. Figures 1 and 2 illustrate the level of interactivity incorporated into the program. As the Throttle Position Sensor slider is adjusted with the mouse, voltage (measured on the voltmeter) varies and the valve in the illustration of the mechanical throttle changes to indicate throttle position. Shop Manual specifications are given for each circuit in a portion of the schematic. These specifications typically give a normal range for voltages and resistances. In circuits that are temperature sensitive, a chart is given showing the temperature-resistance relationship along with the ambient temperature.

The ATech 3631 has two modes of operation - Training and Advanced. The Training mode allows measurements across component connector pins. The Advanced mode only allows back probing of connector pins which creates the same conditions as the real vehicle. The two modes allow easy transition of theoretical concepts to actual troubleshooting skill.

This is the training program that is used in the ATech/AIPC Invitational Workshop and it has challenged the best troubleshooters out there. If you don't know the basics of electrical troubleshooting techniques, you will not be able to solve any of these problems. Learn those techniques first.

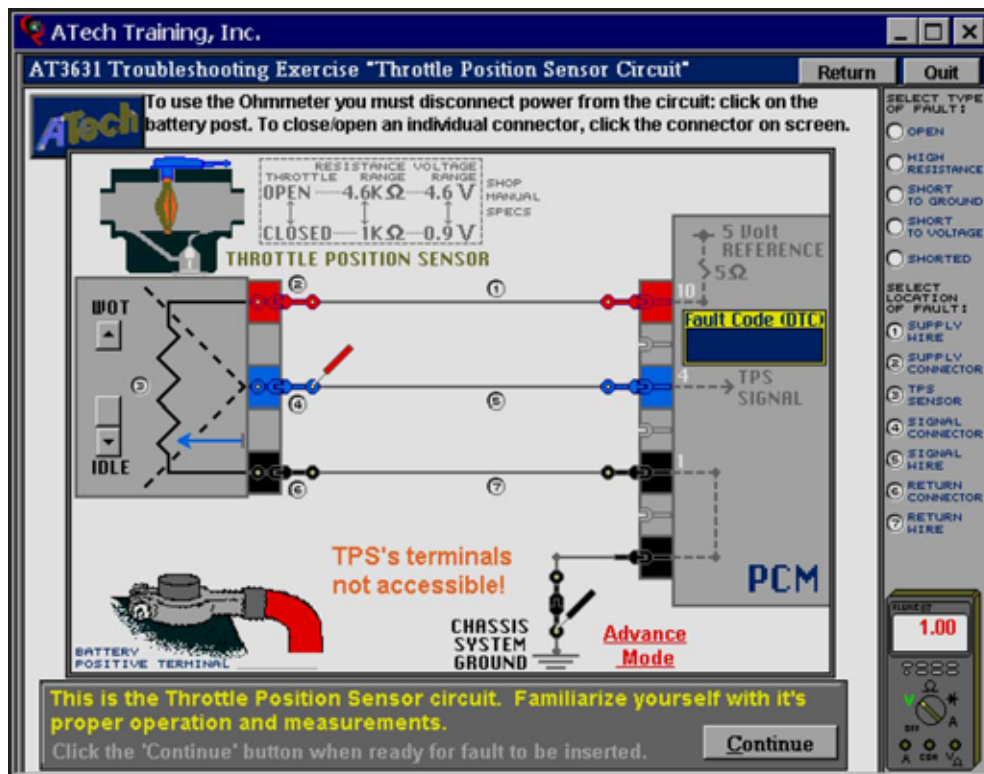


Figure 1

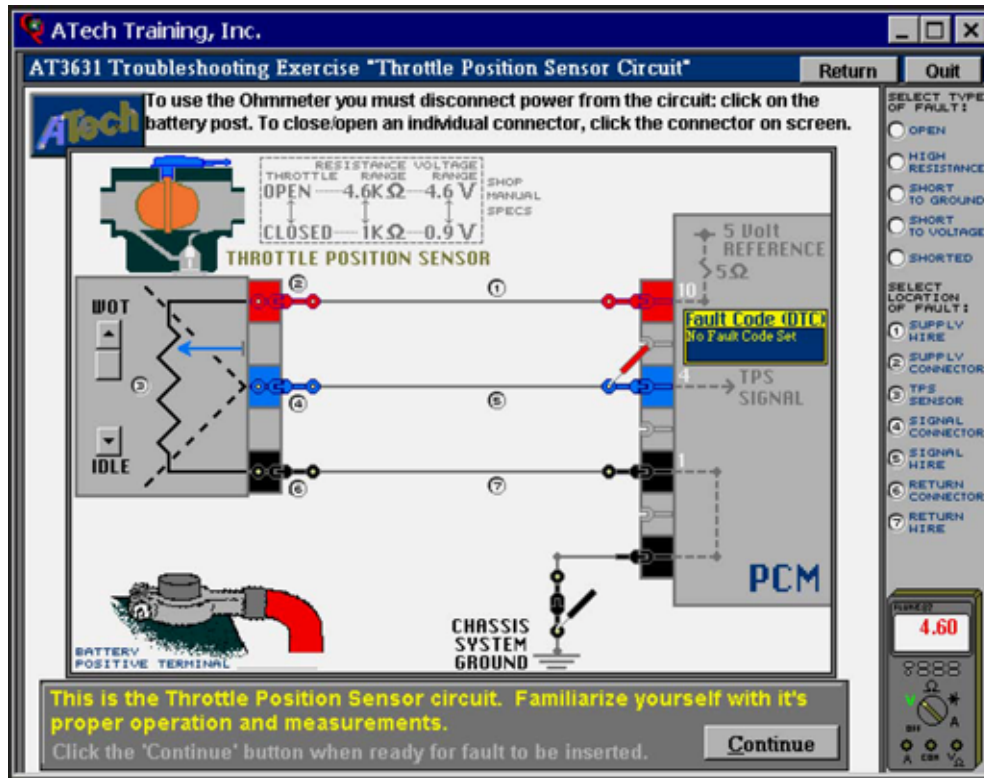


Figure 2

The 3631 Demonstration Program allows troubleshooting of two faults - one in the throttle position sensor circuit and one in the fuel pump relay circuit. Operation in both the "Training" mode and the "Advanced" mode is included. Download the program and save it to some location on your computer's hard drive. It is a self extracting zip file and will install itself when it is double-clicked. The demo program is 3.8 Meg in size. If this size is too large for you to download, contact ATech at [sales@atechtraining.com](mailto:sales@atechtraining.com). Include your complete mailing address and we will send you a CD containing the Demo program.

A brochure containing a more detailed description in PDF format is also on the Products/Computer Based Instruction page.

**CALL NOW TO PLACE YOUR ORDER (PRESS 1 FOR SALES)**

ATech Training, Inc.  
 12290 Chandler Drive, Walton, KY 41094  
 Ph: (859) 485-7229 Fax: (859) 485-7299

