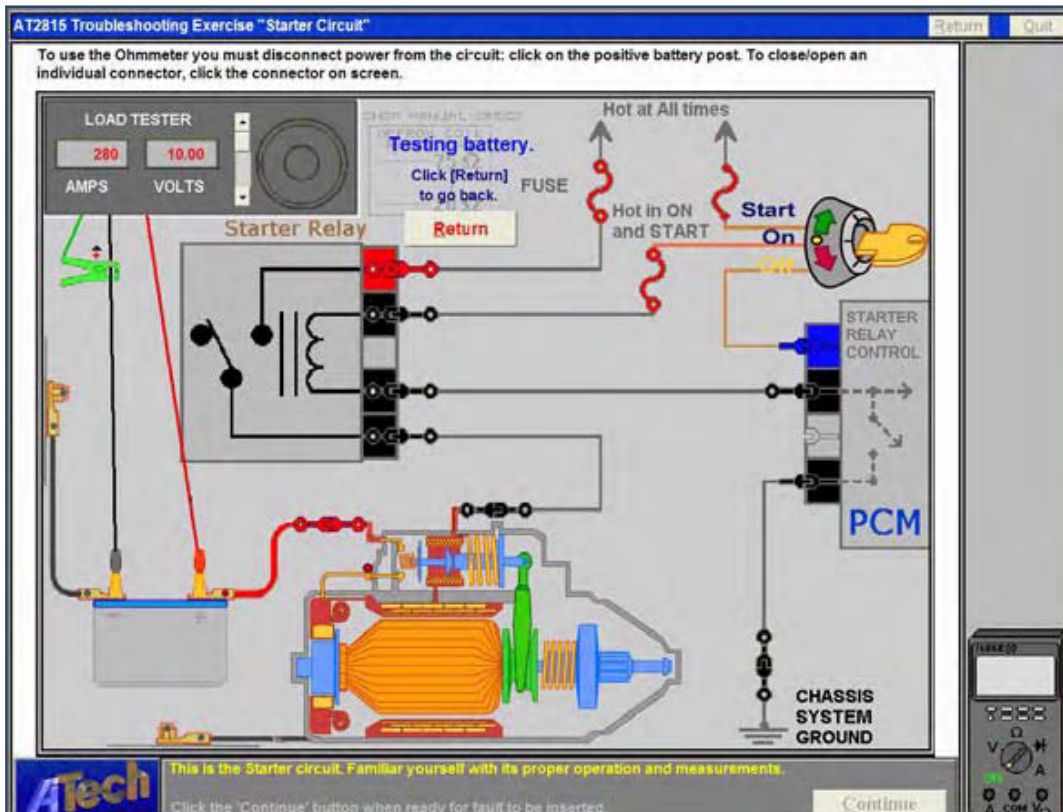


STARTER, BATTERY AND TESTER TROUBLESHOOTING MODEL 2815



The link to download the 2815 Demo software is an exe file (self extracting zip). Download to any location and then double-click on it to install. Click on the Test Battery button to use the battery tester. To select a fault location, move the cursor over the location numbers, it will change to a pen, click and the location will appear in the right selection bar. The demo program has 4 random faults. **There are also hot keys which will change the screen size - alt and s keys together will change to small screen, alt and l (lower case L) will change to larger screen.**

FEATURES:

- Student records may be prepared using the Instructor Management Program (IMP) in the "Central Records" directory (either on the LAN server or instructor's computer).
- Student performance records are recorded to Central Records or student disk as the student proceeds through the program.
- The IMP initializes the student record by assigning an I.D. number and password for the student to operate the program on the student computer.

CALL NOW TO PLACE YOUR ORDER (PRESS 1 FOR SALES)

A Tech Training, Inc.
12290 Chandler Drive, Walton, KY 41094
Ph: (859) 485-7229 Fax: (859) 485-7299

A Tech
Automotive Technology